



Snrp116 Polyclonal Antibody

| | |
|---------------------------|---|
| Catalog No | YP-Ab-02028 |
| Isotype | IgG |
| Reactivity | Human;Mouse |
| Applications | WB;IHC;IF;ELISA |
| Gene Name | EFTUD2 |
| Protein Name | 116 kDa U5 small nuclear ribonucleoprotein component |
| Immunogen | The antiserum was produced against synthesized peptide derived from human EFTUD2. AA range:321-370 |
| Specificity | Snrp116 Polyclonal Antibody detects endogenous levels of Snrp116 protein. |
| Formulation | Liquid in PBS containing 50% glycerol, 0.5% BSA and 0.02% sodium azide. |
| Source | Polyclonal, Rabbit,IgG |
| Purification | The antibody was affinity-purified from rabbit antiserum by affinity-chromatography using epitope-specific immunogen. |
| Dilution | WB: 1/500 - 1/2000. IHC: 1/100 - 1/300. ELISA: 1/40000.. IF 1:50-200 |
| Concentration | 1 mg/ml |
| Purity | ≥90% |
| Storage Stability | -20°C/1 year |
| Synonyms | EFTUD2; KIAA0031; SNRNP116; 116 kDa U5 small nuclear ribonucleoprotein component; Elongation factor Tu GTP-binding domain-containing protein 2; SNU114 homolog; hSNU114; U5 snRNP-specific protein; 116 kDa; U5-116 kDa |
| Observed Band | 109kD |
| Cell Pathway | Nucleus . |
| Tissue Specificity | Bone marrow,Epithelium,Muscle,Thalamus,Uterus, |
| Function | function:Component of the U5 snRNP complex required for pre-mRNA splicing.,PTM:Phosphorylated upon DNA damage, probably by ATM or ATR.,similarity:Belongs to the GTP-binding elongation factor family. EF-G/EF-2 subfamily.,subunit:Identified in the spliceosome C complex, at least composed of AQR, ASCC3L1, C19orf29, CDC40, CDC5L, CRNKL1, DDX23, DDX41, DDX48, DDX5, DGCR14, DHX35, DHX38, DHX8, EFTUD2, FRG1, GPATC1, HNRPA1, HNRPA2B1, HNRPA3, HNRPC, HNRPF, HNRPH1, HNRPK, HNRPM, HNRPR, HNRPU, KIAA1160, KIAA1604, LSM2, LSM3, MAGOH, MORG1, PABPC1, PLRG1, PNN, PPIE, PPIL1, PPIL3, PPWD1, PRPF19, PRPF4B, PRPF6, PRPF8, RALY, RBM22, RBM8A, RBMX, SART1, SF3A1, SF3A2, SF3A3, SF3B1, SF3B2, SF3B3, SFRS1, SKIV2L2, SNRPA1, SNRPB, SNRPB2, SNRPD1, SNRPD2, SNRPD3, SNRPE, SNRPF, SNRPG, SNW1, SRRM1, SRRM2, SYF2, SYNCRIP, TFIP11, THOC4, U2AF1, WDR57, XAB2 and ZCCHC8. Binds GTP. Interacts with |

PRPF8.,

Background

This gene encodes a GTPase which is a component of the spliceosome complex which processes precursor mRNAs to produce mature mRNAs. Mutations in this gene are associated with mandibulofacial dysostosis with microcephaly. Multiple transcript variants encoding different isoforms have been found for this gene. [provided by RefSeq, Apr 2012],

matters needing attention

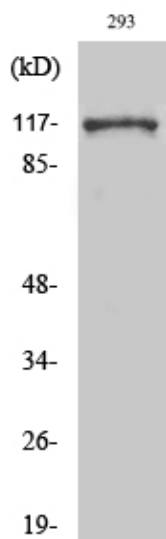
Avoid repeated freezing and thawing!

Usage suggestions

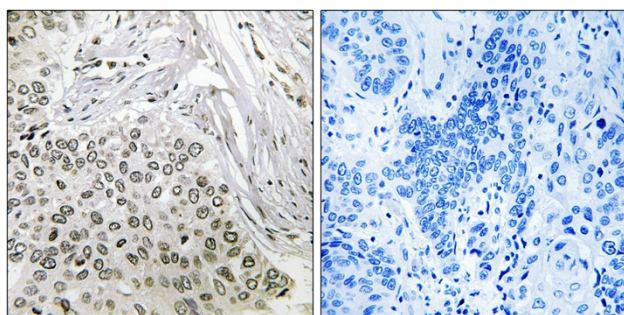
This product can be used in immunological reaction related experiments. For more information, please consult technical personnel.



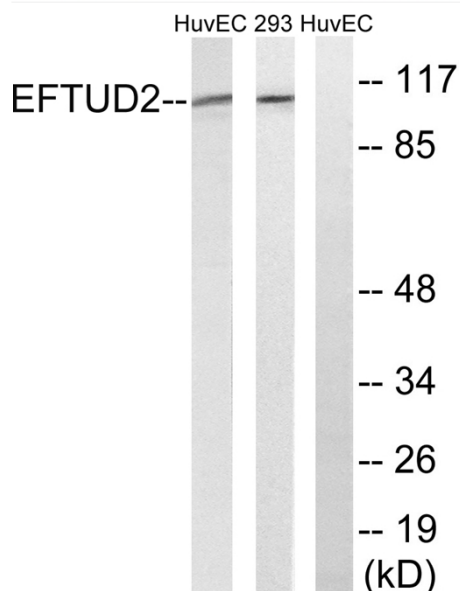
Products Images



Western Blot analysis of various cells using Snrp116 Polyclonal Antibody cells nucleus extracted by Minute TM Cytoplasmic and Nuclear Fractionation kit (SC-003, Inventbiotech, MN, USA).



Immunohistochemistry analysis of paraffin-embedded human lung carcinoma tissue, using EFTUD2 Antibody. The picture on the right is blocked with the synthesized peptide.



Western blot analysis of lysates from 293 and HUVEC cells, using EFTUD2 Antibody. The lane on the right is blocked with the synthesized peptide.